

7392 Count Cir, Huntington Beach, CA 92647  
Phone: (714) 596-4461

PART #	DESCRIPTION
DT927622P	18-UP JL 2" REAR 2.5 ENDUROSPORT IR

COMPONENTS INCLUDED	
(2) DT124959NR-AL 18-UP JT 1.5" REAR 2.5" SHOCK	
HARDWARE INCLUDED	
N/A	
TOOLS REQUIRED	
JACK JACK STANDS TORQUE WRENCH	8MM SOCKET / WRENCH 18MM SOCKET / WRENCH
TECH NOTES	
<p>1. THESE SHOCKS REQUIRE A MINIMUM OF A 1.00" BUMP STOP SPACER TO AVOID DAMAGE.</p> <p>2. YOUR DYNATRAC SHOCK ASSEMBLIES COME FACTORY CHARGED TO 250 PSI. RELEASING NITROGEN PRESSURE MAY LEAD TO SHOCK MALFUNCTION AND REDUCED RIDE QUALITY. FAILURE CAUSED BY LOW NITROGEN PRESSURE IS NOT COVERED UNDER DYNATRAC'S WARRANTY POLICY.</p>	

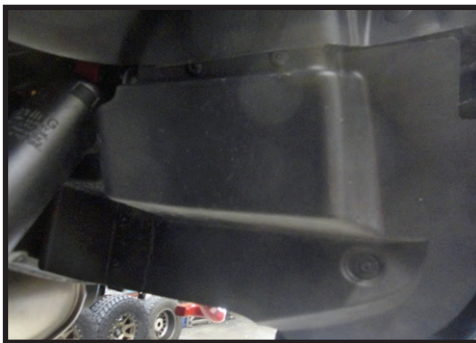


WARNING!
<p><b>** READ ALL INSTRUCTIONS THOROUGHLY FROM START TO FINISH BEFORE BEGINNING INSTALLATION! IF THESE INSTRUCTIONS ARE NOT PROPERLY FOLLOWED SEVERE FRAME, SUSPENSION AND TIRE DAMAGE MAY RESULT TO THE VEHICLE!</b></p> <p><b>** DYNATRAC RECOMMENDS THAT YOU EXERCISE EXTREME CAUTION WHEN WORKING UNDER A VEHICLE THAT IS SUPPORTED WITH JACK STANDS.</b></p> <p><b>** DYNATRAC RECOMMENDS ALL INSTALLATION TO BE PERFORMED BY A PROFESSIONAL SHOP/SERVICE TECHNICIAN. PRODUCT FAILURE CAUSED BY IMPROPER INSTALLATION WILL NOT BE COVERED UNDER DYNATRAC'S WARRANTY POLICY.</b></p>

## INSTALLATION

- Using a properly rated jack, raise the rear of the vehicle and support the frame rails with jack stands. Ensure the jack stands are secure and set properly before lowering the jack. NEVER WORK UNDER AN UNSUPPORTED VEHICLE. Remove the rear wheels.
- Remove the rear plastic section of fender liner using an 8mm socket/wrench. **[FIGURE 1]**

FIG.1



- Remove the factory rear shocks using an 18mm socket/wrench. **[FIGURE 2 & 3]**

FIG.2

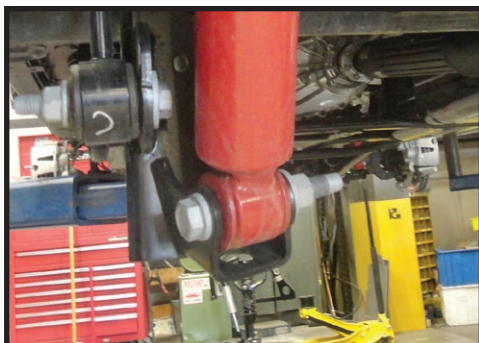


FIG.3

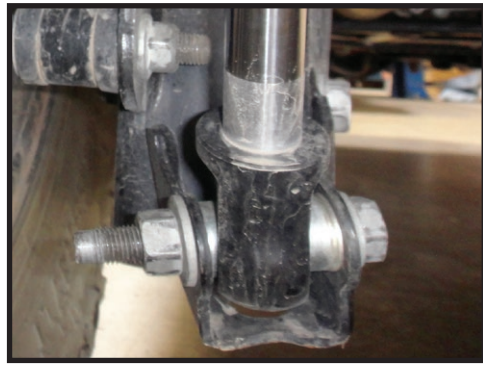


**4.** Using the factory hardware, install the DYNATRAC rear shocks with the long heim spacers toward the frame. Tighten the shock mounting bolts with an 18mm socket/wrench. [Torque to factory spec] [FIGURE 4 & 5]

**FIG.4**



**FIG.5**



- 5.** The rear plastic section of fender liner may require some trimming for shock clearance.
- 6.** Remount the plastic section of fender liner using an 8mm.
- 7.** Reinstall the wheels and slowly lower the vehicle to the ground. [Torque lugs to factory spec]

***VERIFY ALL FASTENERS ARE PROPERLY TORQUED BEFORE DRIVING VEHICLE.***

***RETORQUE ALL NUTS, BOLTS AND LUGS AFTER 100 MILES AND PERIODICALLY THEREAFTER.***

## 2.5 SERIES SHOCK & COILOVER TECHNICAL INFORMATION

### MAINTENANCE

DYNATRAC shock absorbers are a high quality rebuildable race style shock absorber designed for optimal performance. With a unit of this caliber on your vehicle, routine maintenance is required to keep them looking and operating in like new condition. Residual oil and assembly lube may be present at all seal paths from the factory out of the box and is considered normal. Pooling of oil however is not acceptable at any time and one should contact the DYNATRAC dealer where purchased.

**BELOW ARE GUIDELINES BASED ON HOW YOU USE YOUR VEHICLE BUT YOUR MILEAGE MAY VARY:**

#### **STREET USE:**

- Send in for factory servicing every 40,000 miles or if a leak develops, ride quality decreases, or they begin to make excessive noise.
- Remove any buildup of road salt, mud, or debris from shocks and coil springs anytime accrued
- Clean with mild soap and water with each oil change or anytime you notice build up.
- Wax the cylinders yearly with automotive wax to prevent corrosion.
- Check nitrogen pressure yearly. (Needle style charge assembly tool)
- Check bearings for excessive wear yearly.
- DO NOT apply any type of lube to the upper and lower bearings.

#### **STREET/DIRT:**

- Send in for factory servicing every 15,000 miles or if a leak develops, ride quality decreases, or they begin to make excessive noise.
- Clean with mild soap and water with each oil change, offroad trip, or anytime you notice build up.
- Wax the cylinders yearly with automotive wax to prevent corrosion.
- Check nitrogen pressure each dirt outing. (Needle style charge assembly tool)
- Check bearings for excessive wear yearly.
- DO NOT apply any type of lube to the upper and lower bearings.

#### **DIRT USE:**

- Send in for factory servicing every 1,000 miles.
- Check nitrogen pressure each outing. (Needle style charge assembly tool)
- Remove any buildup of mud or debris from shocks and coil springs after every outing.

#### **SELF-SERVICE:**

- Contact DYNATRAC for service kits & tools at (714) 596-4461.

### DYNATRAC SHOCK ABSORBER WARRANTY

This shock absorber has a 1 year warranty against any manufacturer's defects. If a shock fails within the initial year of ownership, the shock must be shipped to DYNATRAC for inspection and service. If a shock is inspected and it has been determined the shock failed due to neglect, damage caused by improper installation or any other reason besides "normal wear and tear", the owner of said shock is responsible for all service costs. This includes labor, parts and shipping.

DYNATRAC warrants to the original retail purchaser who owns the vehicle on which the product was originally installed. DYNATRAC does not warrant the product for finish, alterations, modifications and/or installation contrary to DYNATRAC instructions. DYNATRAC products are not designed, nor are they intended to be installed on vehicles used in race applications, for racing purposes or for similar activities. (A "race" is defined as any contest between two or more vehicles, or a contest of one or more vehicles against the clock, whether or not such contest is for a prize). This warranty does not include coverage for police or taxi vehicles, race vehicles, or vehicles used for government or commercial purposes. Also excluded from this warranty are sales outside of the United States of America and Canada.

DYNATRAC'S obligation under this warranty is limited to the repair or replacement, at DYNATRAC'S discretion, of the defective product. Any and all costs of removal, installation or re-installation, freight charges and incidental or consequential damages are expressly excluded from this warranty. Items that are subject to wear are not considered defective when worn and are not covered.

DYNATRAC components must be installed as a complete kit as shown in our current application guide. Any substitutions or exemptions of required components will immediately void the warranty. Some finish damage may happen to parts during shipping and is not covered under warranty.

This warranty is expressly in lieu of all other warranties expressed or implied. This warranty shall not apply to any product that has been improperly installed, modified or customized subject to accident, negligence, abuse or misuse.

# **DYNATRAC**

**CONFIDENCE TO EXPLORE®**

7392 Count Cir, Huntington Beach, CA 92647 Phone: (714) 596-4461  
www.dynatrac.com

