

PART #	DESCRIPTION
DT922021	18-UP JEEP JL FRONT LOWER LINK KIT

COMPONENTS INCLUDED	
(2) 124060 18-UP JEEP JL FRONT LOWER LINK	
HARDWARE INCLUDED	
N/A	
TOOLS REQUIRED	
TORQUE WRENCH 15MM SOCKET / WRENCH	21MM SOCKET / WRENCH 24MM SOCKET / WRENCH
TECH NOTES	
1. DYNATRAC FRONT LOWER LINKS ARE LONGER THAN FACTORY LINKS AND WILL INCREASE CASTER BEYOND THE FACTORY ALIGNMENT RANGE IF USED AT STOCK RIDE HEIGHT.	

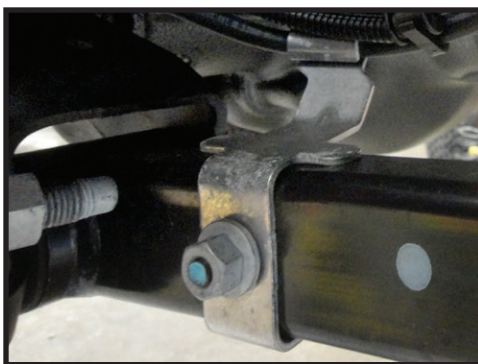


WARNING!
<p>** READ ALL INSTRUCTIONS THOROUGHLY FROM START TO FINISH BEFORE BEGINNING INSTALLATION! IF THESE INSTRUCTIONS ARE NOT PROPERLY FOLLOWED SEVERE FRAME, SUSPENSION AND TIRE DAMAGE MAY RESULT TO THE VEHICLE!</p> <p>** DYNATRAC RECOMMENDS THAT YOU EXERCISE EXTREME CAUTION WHEN WORKING UNDER A VEHICLE THAT IS SUPPORTED WITH JACK STANDS.</p> <p>** DYNATRAC RECOMMENDS ALL INSTALLATION TO BE PERFORMED BY A PROFESSIONAL SHOP/SERVICE TECHNICIAN. PRODUCT FAILURE CAUSED BY IMPROPER INSTALLATION WILL NOT BE COVERED UNDER DYNATRAC'S WARRANTY POLICY.</p>

INSTALLATION

1. Place the vehicle on a smooth, level surface. Ensure that the vehicle is in PARK, engage the emergency brake, and chock the tires before performing any work to the vehicle. DYNATRAC will not be held liable for any injuries or failure caused by improper installation.
2. Remove the brake line bracket from the front lower links using a 15mm socket/wrench. [FIGURE 1]

FIG.1



3. Remove the factory front lower link from one side of the vehicle using a 21mm and a 24mm.

4. Install the DYNATRAC front lower link using a 21mm and 24mm and the factory hardware. The bend goes to the inside for tire clearance and should be closer to the differential. [Torque to factory spec] [FIGURE 2 & 3]

FIG.2

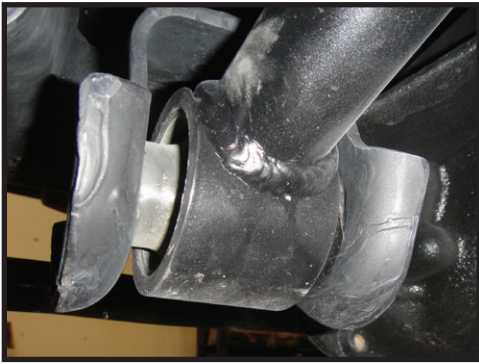
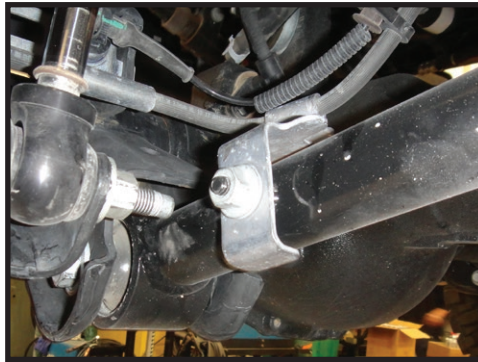


FIG.3



5. Fasten the brake line bracket to the link using the factory hardware. [Torque to factory spec] [FIGURE 4]

FIG.4



6. Repeat steps on the opposite side.

VERIFY ALL FASTENERS ARE PROPERLY TORQUED BEFORE DRIVING VEHICLE.

RETORQUE ALL NUTS, BOLTS AND LUGS AFTER 100 MILES AND PERIODICALLY THEREAFTER.

DYNATRAC LIMITED LIFETIME WARRANTY

DYNATRAC warrants to the original retail purchaser who owns the vehicle on which the product was originally installed. DYNATRAC does not warrant the product for finish, alterations, modifications and/or installation contrary to DYNATRAC instructions. DYNATRAC products are not designed, nor are they intended to be installed on vehicles used in race applications, for racing purposes or for similar activities. (A "race" is defined as any contest between two or more vehicles, or a contest of one or more vehicles against the clock, whether or not such contest is for a prize). This warranty does not include coverage for police or taxi vehicles, race vehicles, or vehicles used for government or commercial purposes. Also excluded from this warranty are sales outside of the United States of America and Canada.

DYNATRAC'S obligation under this warranty is limited to the repair or replacement, at DYNATRAC'S discretion, of the defective product. Any and all costs of removal, installation or re-installation, freight charges and incidental or consequential damages are expressly excluded from this warranty. Items that are subject to wear are not considered defective when worn and are not covered.

DYNATRAC components must be installed as a complete kit as shown in our current application guide. Any substitutions or exemptions of required components will immediately void the warranty. Some finish damage may happen to parts during shipping and is not covered under warranty.

This warranty is expressly in lieu of all other warranties expressed or implied. This warranty shall not apply to any product that has been improperly installed, modified or customized subject to accident, negligence, abuse or misuse.

DYNATRAC
CONFIDENCE TO EXPLORE®

7392 Count Cir, Huntington Beach, CA 92647 Phone: (714) 596-4461
www.dynatrac.com

